

RESU Optional Components

For 3.3kWh / 6.5kWh / 10kWh Battery Packs

Optional Components

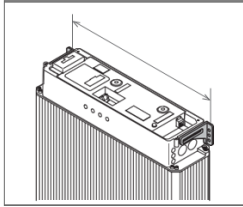


Item	RESU 3.3 / RESU 6.5				RESU 10			
Support				1 EA				1 EA
Wall Mounting Plate				1 EA				2 EA
	Anchor Bolt 14 EA	Hexagon head Bolt 	Flat Washer(2EA) 	8 Set	Set Anchor Bolt 8 EA	Hexagon head Bolt 	Flat Washer(2EA) 	8 Set

※ Caution

Even if battery pack is installed on a Support or Wall Mounting Plate, make sure that the essential parts, Mounting Brackets, must install to prevent the battery pack from moving.

Step 1



Determine the optimal location for RESU pack and the Mounting Brackets to be placed. The Mounting Brackets must be bolted into a stud or a load-bearing wall.

Step 2

Position and place the Support on the floor or attached the Wall Mounting Plate into the studs. For the Wall Mounting Plate, flat side mounts flush with the wall and two bumps attached to the bottom part of the RESU pack.

Step 3

Option # 1

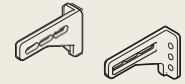
Place the RESU Pack on the Support.

Option # 2

Place the RESU Pack on the Wall Mounting Plate.

Use the Flange Bolt and Flat Washer to firmly attached the RESU pack to the Wall Mounting Plate.

[Essential parts]

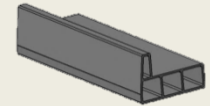


Mounting Brackets

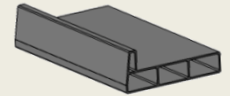
[Optional parts]

▪ Support

- RESU3.3 / 6.5

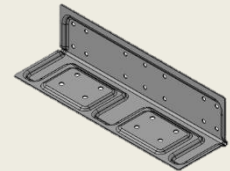


- RESU10

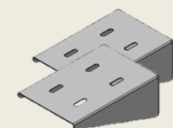


▪ Wall Mounting Plate

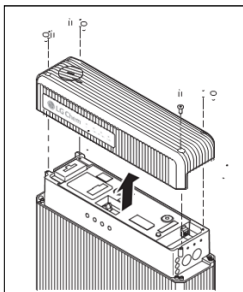
- RESU3.3 / 6.5



- RESU10

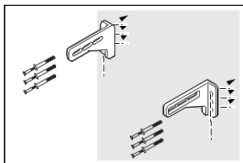


Step 4



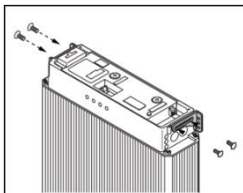
Remove the top cover of the RESU pack.
Loosen the four hex-socket screws at each corner of the top cover, and then pull it upwards.

Step 5



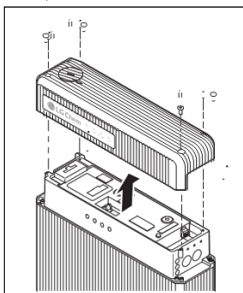
Drill holes in the wall for M6 (¼ in) screw anchors.
The drilling depth should be at least 50mm.
Drive the screw anchors through the Mounting Brackets into the holes.
Tighten the screws to a torque of 5 N·m.

Step 6



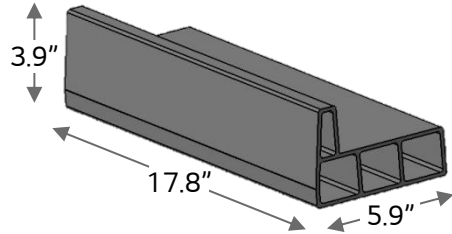
There are holes for Mounting Brackets on the top of the both sides of the RESU pack.
Secure the mounting brackets to the holes using the M5 screws.
Tighten them to a torque of 5 N·m.

Step 7

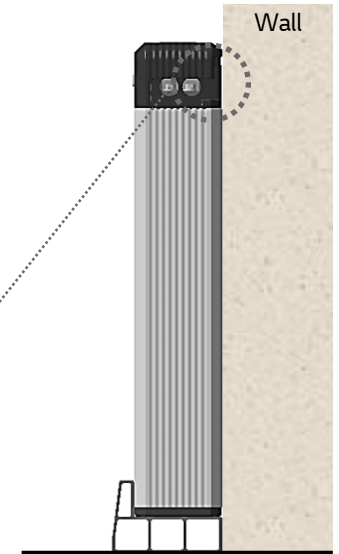
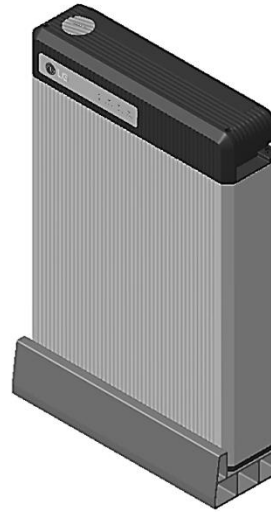


Cover the top cover of the RESU pack and tighten the four hex-socket screws at each corner of the top cover.

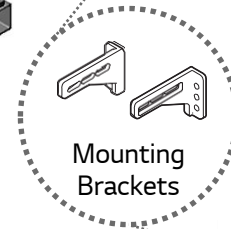
1. Support for RESU 3.3 / RESU 6.5



3.3/6.5kWh Physical Characteristics		
Width	in (mm)	17.8 (452)
Depth	in (mm)	5.9 (150)
Height	in (mm)	3.9 (100)
Material		Al

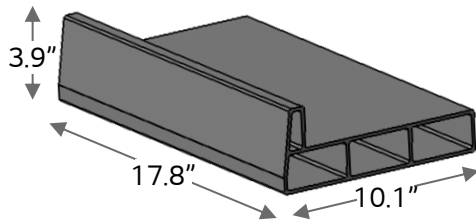


Side view

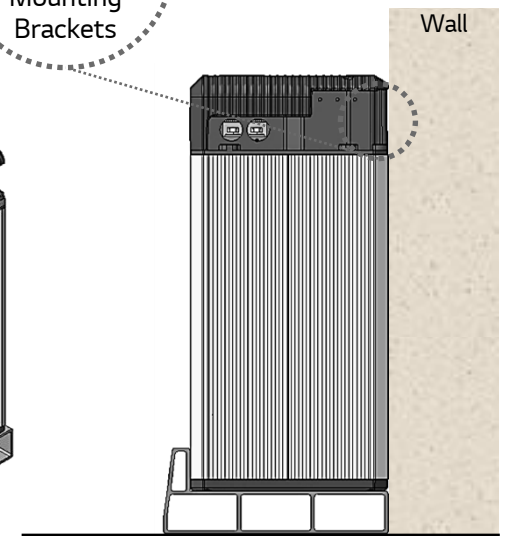
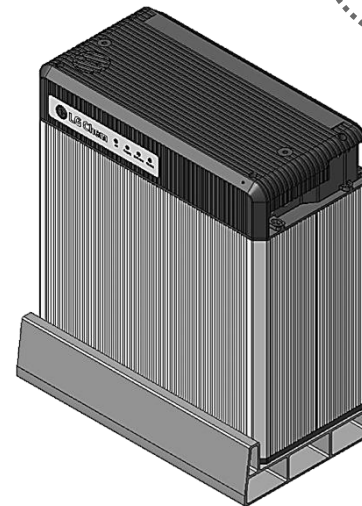


Mounting Brackets

2. Support for RESU 10



10kWh _ Physical Characteristics		
Width	in (mm)	17.8 (452)
Depth	in (mm)	10.1 (257)
Height	in (mm)	3.9 (100)
Material		Al

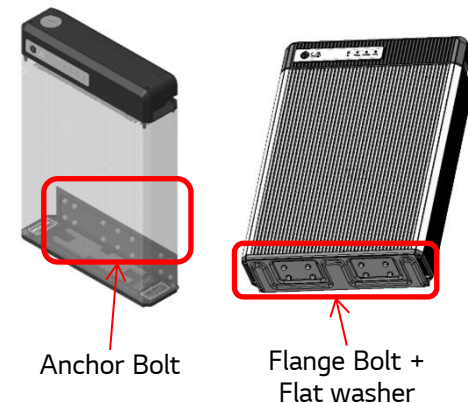


Side view

Optional Components _ Wall Mounting Plate

1. Wall Mounting Plate for RESU 3.3 / RESU 6.5

Item	Wall Mounting Plate	Anchor Bolt	Hexagon head Bolt	Flat Washer
Image				
Size	5" x 16.5" x 4.3" (216mm x 420mm x 109mm)	M6 x L25	M8 x L10	Thickness 1.6t
Q'ty	1 EA	14 EA	8 EA	16 EA
Material	Sheet iron (Hot dip Galvanizing)	-	-	SUS



2. Wall Mounting Plate for RESU 10

Item	Wall Mounting Plate	Set Anchor Bolt	Hexagon head Bolt	Flat Washer
Image				
Size	8.6" x 5.7" x 3.3" (219mm x 146mm x 85mm)	M8 x L62	M8 x L10	Thickness 1.6t
Q'ty	2 EA	8 EA	8 EA	16 EA
Material	Sheet iron (Hot dip Galvanizing)	-	-	SUS

